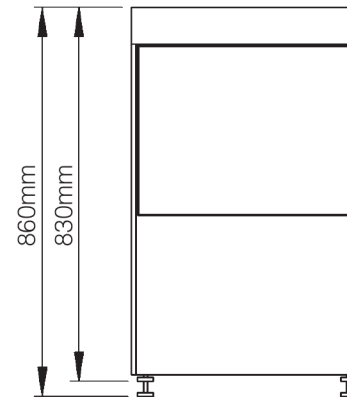
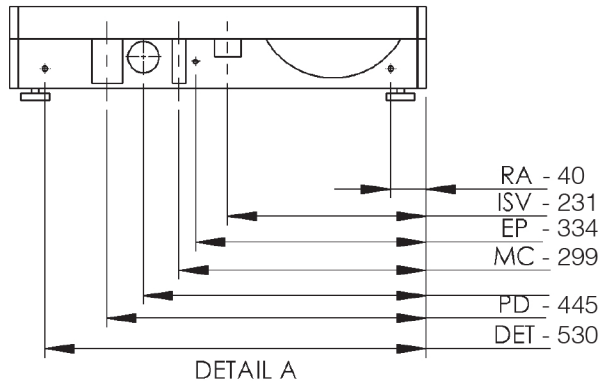
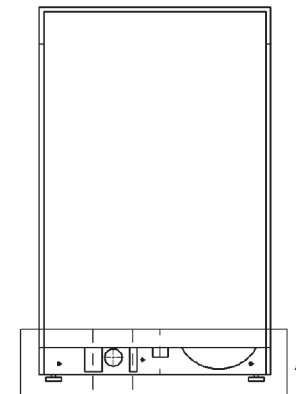
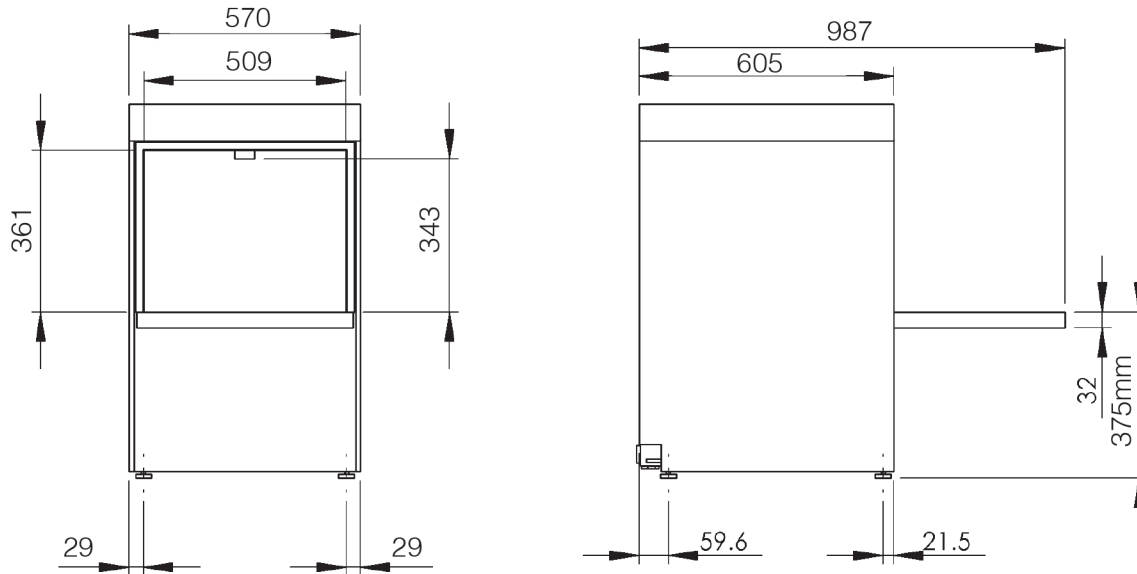




Mechanical Specifications D500 DUO WS



Additional Info:

	D500DUO
Wash water temperature	55°C
Dish Washer rinse temperature	82°C
Noise level	Under 70dB
Empty weight	54.7kg
Fully Loaded weight	75.2kg
Packed weight	68.3kg DUO model 70.4kg DUOWS model

Dimensions (mm):

570 (W) x 830 (H) (860 max) x 605 (D)

Description	Symbol	Radius from machine (m)
Rinse aid tube	RA	3
Inlet solenoid valve	ISV	1.8
Mains electrical cable	EC	1.3
Pumped waste water outlet	PD	1.5
Equipotential bonding stud	EP	-
Detergent tube	DET	3



Locally manufactured

Our machines are Made in Britain (Staffordshire) meaning shorter lead times on delivery, parts and support.



LCD display

The D500DUO enhances user functionality by displaying rinse and wash tank temperatures.



Water Board (WRAS) compliant

All Duo machines are fully compliant with essential Water Board regulations.



Colour Coded Display

Amber flashing - Machine heating
Blue - Machine in cycle
Green - Machine ready



3 Wash Programs

The D500DUO Standard (2 min), heavy (3min) and intensive (5min) cycles allow for maximum output without compromising wash quality.



Double skinned sides and door

Allows for quieter operation and reduced heat loss.



Advanced Customer Features

Adjust rinse aid and detergent settings, priming of chemical pumps and set water softener to match local water hardness levels (WS models only).



Operational Data monitoring

Our machine constantly measures all cycles, heating and errors providing useful data for improving efficiencies.

Machine Features:

1 500mm x 500mm basket	2 Built-in chemical pumps	3 Drain pump	4 Rinse Booster Pump	5 Temperature interlock - guarantees hot rinse
6 Energy saving standby mode	7 Stainless steel dual wash filter system	8 Assisted self-clean	9 Easily removable components	

Hydraulic specifications

Water supply connection	G3/4" (3/4" BSP)
Minimum allowed supply water pressure	0.5 bar D500DUO model only 2.0 bar D500DUOWS model only
Required water flow rate	11 L/min D500DUO model only 4 L/min D500DUOWS model only
Minimum incoming water temperature	4°C
Maximum incoming water temperature	55°C
Gravity drain height (from machine base)	40 mm D500DUO model only N/A D500DUOWS model only
Pumped drain height (from machine base)	600 mm
Drain size	Ø40 mm

Electrical specifications

Standard Set-up

Amps Required	30A (1 phase)
Standard Operating Voltage	220-240V / 1N~ / 50Hz
Total Connected Load	6.58kW

Optional Set-up

Amps Required	13A (3 phase)
Standard Operating Voltage	380-415V / 3N~/50Hz
Total Connected Load	6.58kW

Optional Set-up

Amps Required	12A (1 phase)
Standard Operating Voltage	220-240V / 1N~ / 50Hz
Total Connected Load	2.58kW

Performance

Wash tank element	2.00kW
Rinse tank element	6.00kW
Wash tank capacity	14.33 litres
Rinse tank capacity	7.5 litres
Rinse water consumption at 3 bar	3.00 L/cycle
Theoretical maximum racks/hours	20
Wash tank temperature	55°C
Rinse tank temperature	82°C
Wash pump power	0.58 kW
Rinse pump power	0.19 kW

Please Note: D500DUOWS Specification as above.