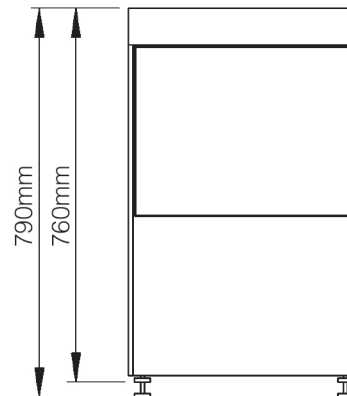
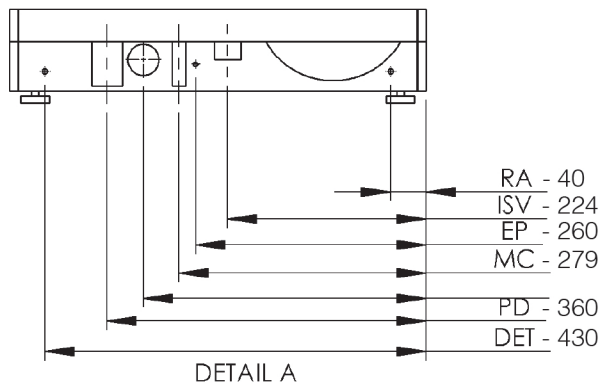
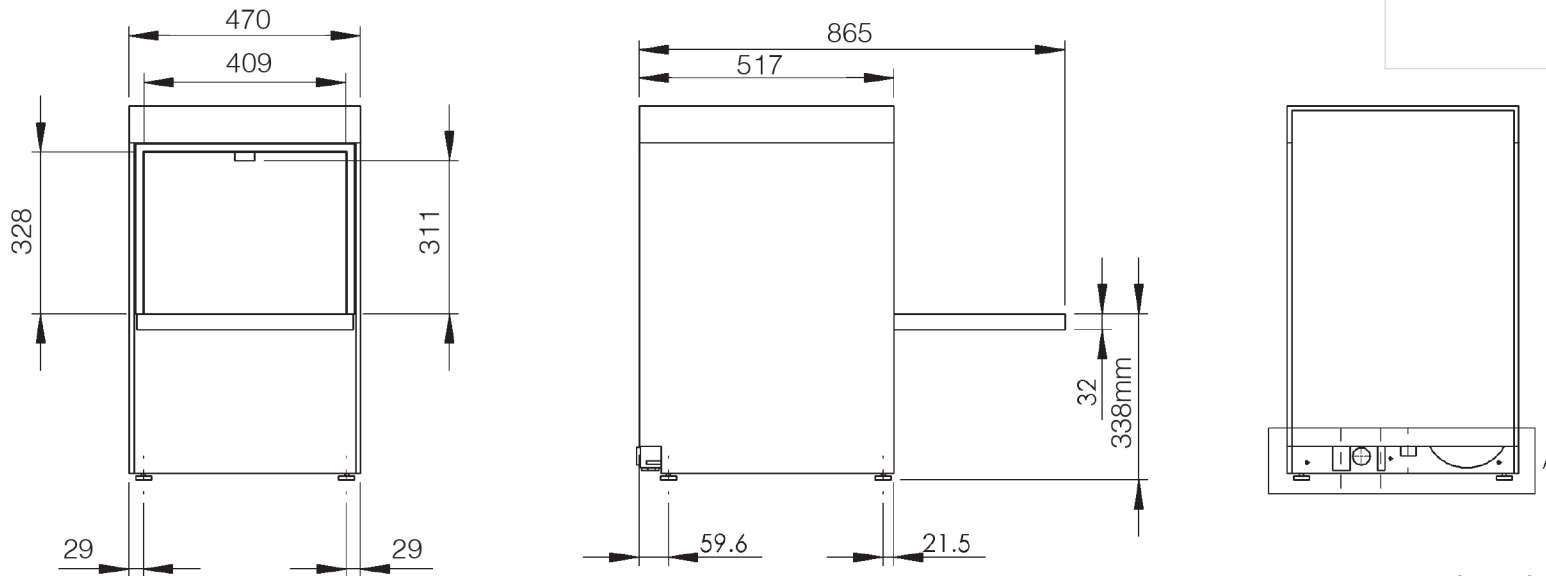


SXHIRE



Mechanical Specifications D400 DUO WS



Additional Info:

	D400DUO
Wash water temperature	55°C
Dish Washer rinse temperature	82°C
Noise level	Under 70dB
Empty weight	40.3kg
Fully Loaded weight	46.8kg
Packed weight	50.0kg DUO model 52.1kg DUOWS model

Dimensions (mm):

470 (W) x 760 (H) (790 max) x 517 (D)

Description	Symbol	Radius from machine (m)
Rinse aid tube	RA	3
Inlet solenoid value	ISV	1.8
Mains electrical cable	EC	1.3
Pumped waste water outlet	PD	1.5
Equipotential bonding stud	EP	-
Detergent tube	DET	3

Telephone: 08448001333 (Office) 03448001555 (Service)

Email: sales@sxhire.co.uk

Address: SXHIRE, Essex House, 21 Eastways, Witham, Essex, CM8 3YQ



Locally manufactured

Our machines are Made in Britain (Staffordshire) meaning shorter lead times on delivery, parts and support.



3 Wash Programs

The D400DUO light (2 min), standard (3min) and intensive (5 min) cycles allow for maximum output without compromising wash quality.



LCD display

The D400DUO enhances user functionality by displaying rinse and wash tank temperatures.



Double skinned sides and door

Allows for quieter operation and reduced heat loss.



Water Board (WRAS) compliant

All Duo machines are fully compliant with essential Water Board regulations.



Advanced Customer Features

Adjust rinse aid and detergent settings, priming of chemical pumps and set water softener to match local water hardness levels (WS models only).



Colour Coded Display

Amber flashing - Machine heating
Blue - Machine in cycle
Green - Machine ready



Operational Data monitoring

Our machine constantly measures all cycles, heating and errors providing useful data for improving efficiencies.

Hydraulic specifications

Water supply connection

Minimum allowed supply water pressure

Required water flow rate

Minimum incoming water temperature

Maximum incoming water temperature

Gravity drain height (from machine base)

Pumped drain height (from machine base)

Drain size

D400DUO

G3/4" (3/4" BSP)

0.5 bar D400DUO model only
2.0 bar D400DUOWS model only

11 L/min D400DUO model only
4 L/min D400DUOWS model only

4°C

55°C

40 mm D400DUO model only
N/A D400DUOWS model only

540 mm

Ø40 mm

Electrical specifications

Standard Set-up

Amps Required

Standard Operating Voltage

Total Connected Load

Optional Set-up

Amps Required

Standard Operating Voltage

Total Connected Load

Optional Set-up

Amps Required

Standard Operating Voltage

Total Connected Load

13A (1 phase)

220-240V / 1N~ / 50Hz

2.85kW

13A (3 phase)*

380-415V / 3N-/50Hz

6.58kW

30A (1 phase)*

220-240V / 1N~ / 50Hz

6.58kW

Performance

Wash tank element

Rinse tank element

Wash tank capacity

Rinse tank capacity

Rinse water consumption at 3 bar

Theoretical maximum racks/hours

Wash tank temperature

Rinse tank temperature

Wash pump power

Rinse pump power

2.00kW

6.00kW

9.77 litres

6.5 litres

3.00 L/cycle

20

55°C

82°C

0.25 kW

0.10 kW

Please Note: D400DUOWS Specification as above.

***Optional Electrical Configurations :** An optional 13amp 3ph or 30amp 1ph configuration is available on all 400 models at an additional price.

Machine Features:

1 400mm x 400mm basket	2 Built-in chemical pumps	3 Drain pump	4 Rinse Booster Pump	5 Energy saving standby mode
6 Stainless steel dual wash filter system	7 Temperature interlock - guarantees hot rinse	8 Assisted self-clean	9 Easily removable components	SXHIRE